

SUPERFICIES

Salón/Comedor/Cocina 35,24m<sup>2</sup>

Dormitorio I 12,49m<sup>2</sup>

Dormitorio II 10,21m<sup>2</sup>

WC I 3,50m<sup>2</sup>

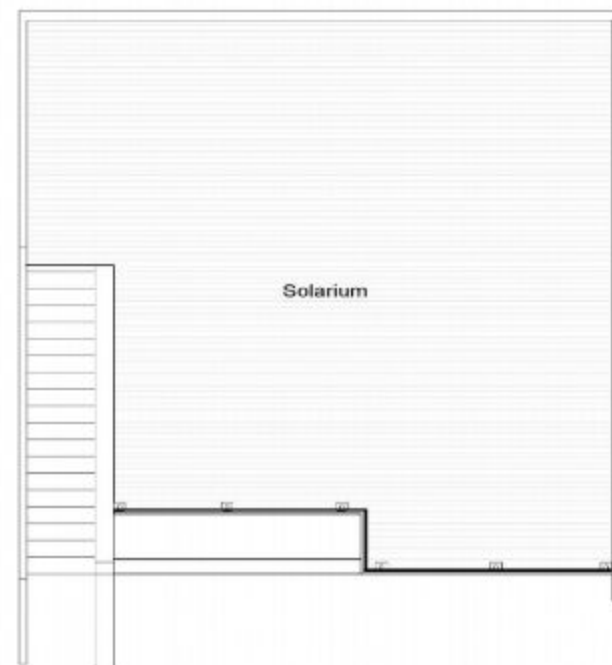
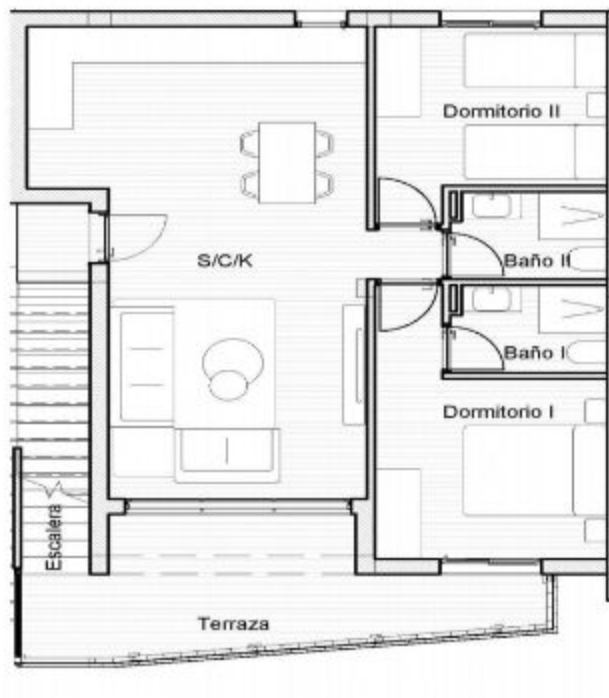
WC II 3,50m<sup>2</sup>

Escalera 6,32m<sup>2</sup>

Terraza 12,94m<sup>2</sup>

Solarium 66,03m<sup>2</sup>

TOTAL 150,23m<sup>2</sup>



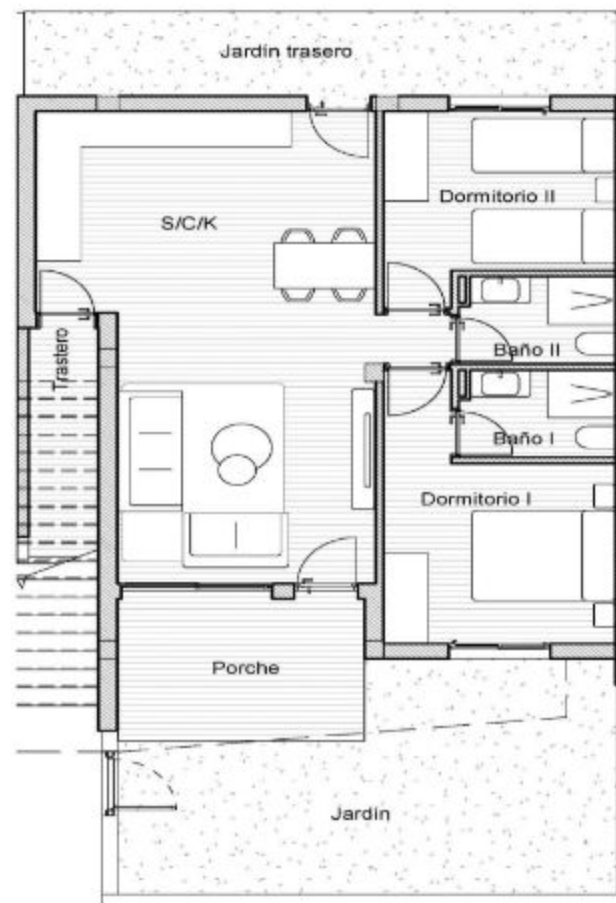
RESIDENCIAL SAOCO II

P1 N°



esc 1/100

SUPERFICIES	
Salón/Comedor/Cocina	35,86m <sup>2</sup>
Dormitorio I	12,49m <sup>2</sup>
Dormitorio II	10,21m <sup>2</sup>
WC I	3,50m <sup>2</sup>
WC II	3,50m <sup>2</sup>
Trastero	3,80m <sup>2</sup>
Porche	11,43m <sup>2</sup>
Jardín	20,76m <sup>2</sup>
Jardín trasero	12,13m <sup>2</sup>
<b>TOTAL</b>	<b>113,65m<sup>2</sup></b>



RESIDENCIAL SAOCO II

PB N<sup>o</sup>

